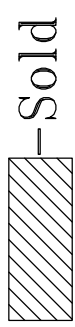
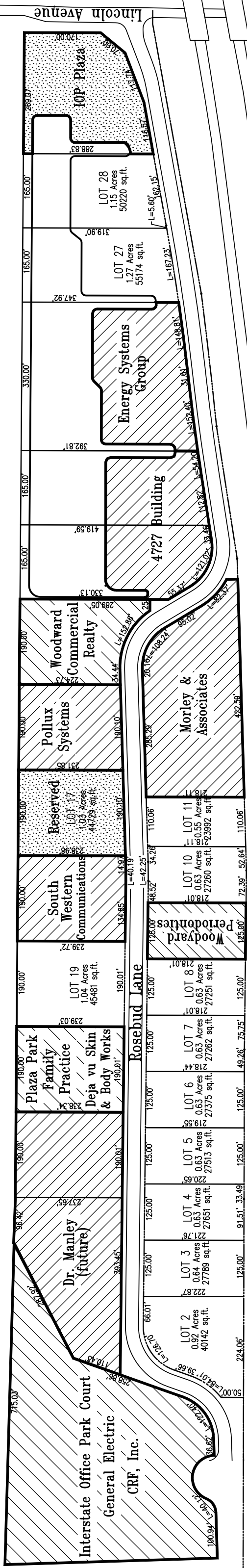
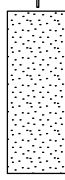


INTERSTATE OFFICE PARK SUBDIVISION



- Sold



- Reserved

DEVELOPER

Woodward Commercial Realty
4763 ROSEBUD LANE/NEWBURGH, IN. 47630
PHONE: (812) 474-1900 FAX: (812) 473-0623

Map Prepared by:
Morley and Associates, inc.
4800 Rosebud Lane/Newburgh, IN. 47630
Proj. No.: 5496 i-o-p market17.dwg 6/9/08 J.E.Wood